

Rensselaer Computing System (RCS) Accounts, Sambasrv and Publishing to Your RPI Webpage

Your RCS account is established just before you begin your studies at RPI. With the account comes your email address (your-rcs-id@rpi.edu), your website space (<http://www.rpi.edu/~your-rcs-id/>), as well as other features. If you haven't gotten your username and password as yet, you should visit the Help Desk in the VCC, or call the staff at 276-7777. Their URL is <http://helpdesk.rpi.edu/setup.do>.

If you have designed your website and are ready to launch it, you must connect to an RPI server called Sambasrv, and also follow certain file storage and naming conventions to get you going.

Connecting to the RCS Network through Sambasrv for Windows Users

<http://helpdesk.rpi.edu/update.do?artcenterkey=389>

If you are not on the RPI network, you must connect via the [Virtual Private Network \(VPN\)](#). Installation instructions can be found at <http://helpdesk.rpi.edu/update.do?artcenterkey=287>

Install the [plain text password patch](#) for your system from <http://helpdesk.rpi.edu/update.do?artcenterkey=118>. Note that if you have a Rensselaer laptop issued before fall 2003, this is already done.

Connecting

- **On a Rensselaer laptop:** Be sure you have logged in with your RCS userID and password in the Windows login dialog box displayed at Windows startup. Once logged in, just double-click the **RCS File and Print icon** on the desktop. In the connect window that appears, check either (or both) of the boxes that allow you to connect to your RCS home directory or to the RCS public areas.



Click OK.

Note: If you have a WinXP laptop setup by RPI in fall 2003 or later, your RCS icon does not connect to sambasrv, but connects instead to an AFS client that allows you to share RCS files without sambasrv. If you use WinXP, connect to sambasrv by mapping your network drive as described in the section below.

On a desktop computer or non-Rensselaer laptop: you will need to map a network drive using one of the methods below.

1. To install the same icon that is on the Rensselaer laptops, follow the instructions for [Mapping a Network Drive](http://helpdesk.rpi.edu/update.do?artcenterkey=333) at <http://helpdesk.rpi.edu/update.do?artcenterkey=333>. This will guide you through downloading the GETSMB program for your system.

OR

2. Alternatively, to map the drive "manually," right-click on the **My Computer** icon on your PC's desktop and select the **Map Network Drive ...** option from the menu that appears. The Map Network Drive window will appear, prompting you for the Drive and Path (or Folder) of the desired disk resource. The Drive letter will default to the next available drive, but you may select any available drive letter. Then type in the desired network path as follows:

To connect to RCS public areas, type `\\sambasrv\public`.

To connect to your RCS home directory, type `\\sambasrv\userID` (substituting your own RCS userID, e.g.

smithj9).

The system may prompt you to enter a password. If so, enter your RCS password and click on the **OK** button



Connecting to the RCS Network through Smbasrv for Mac OS 10.4.2 Users

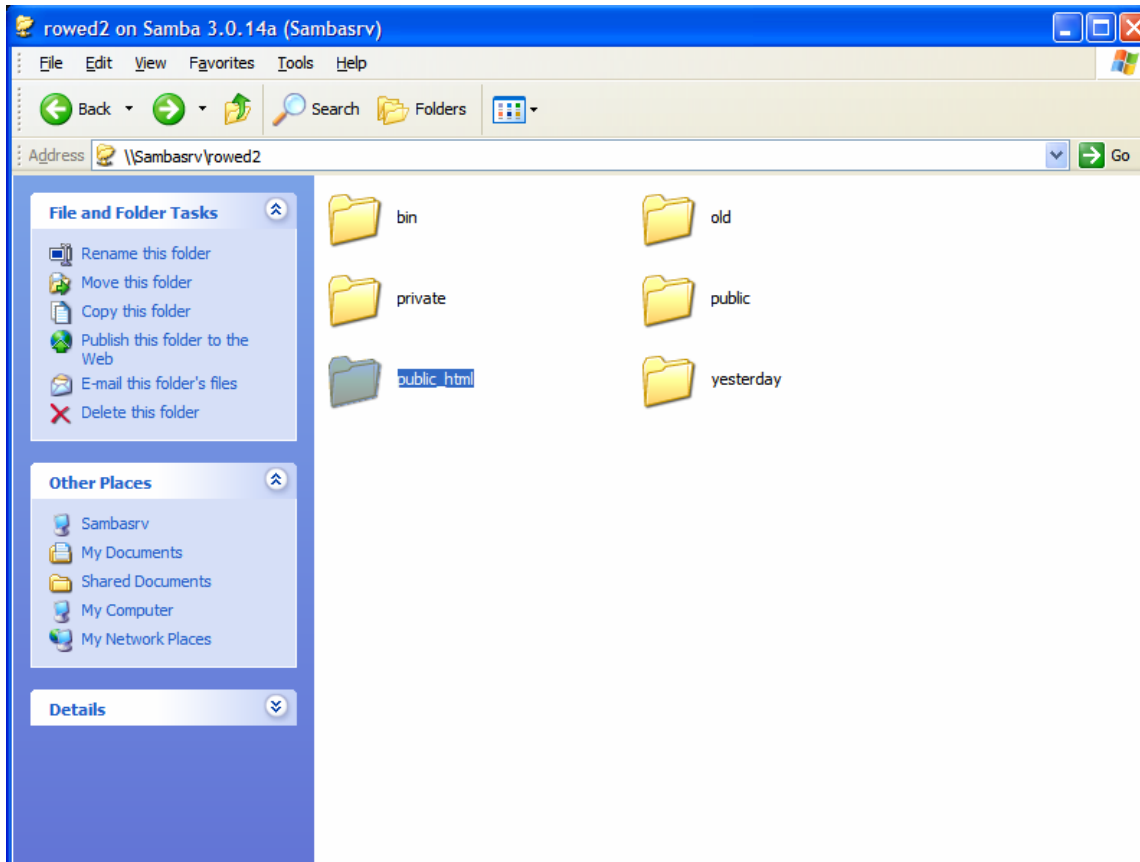
(<http://helpdesk.rpi.edu/update.do?artcenterkey=508>)

There is a configuration step to allow plain-text passwords in Mac OS 10.4.2, since by default, 10.4 would never use plain-text. <http://docs.info.apple.com/article.html?artnum=301580> is a tech note that documents what is needed (even though the error message you now see may be different than the one it mentions). In short:

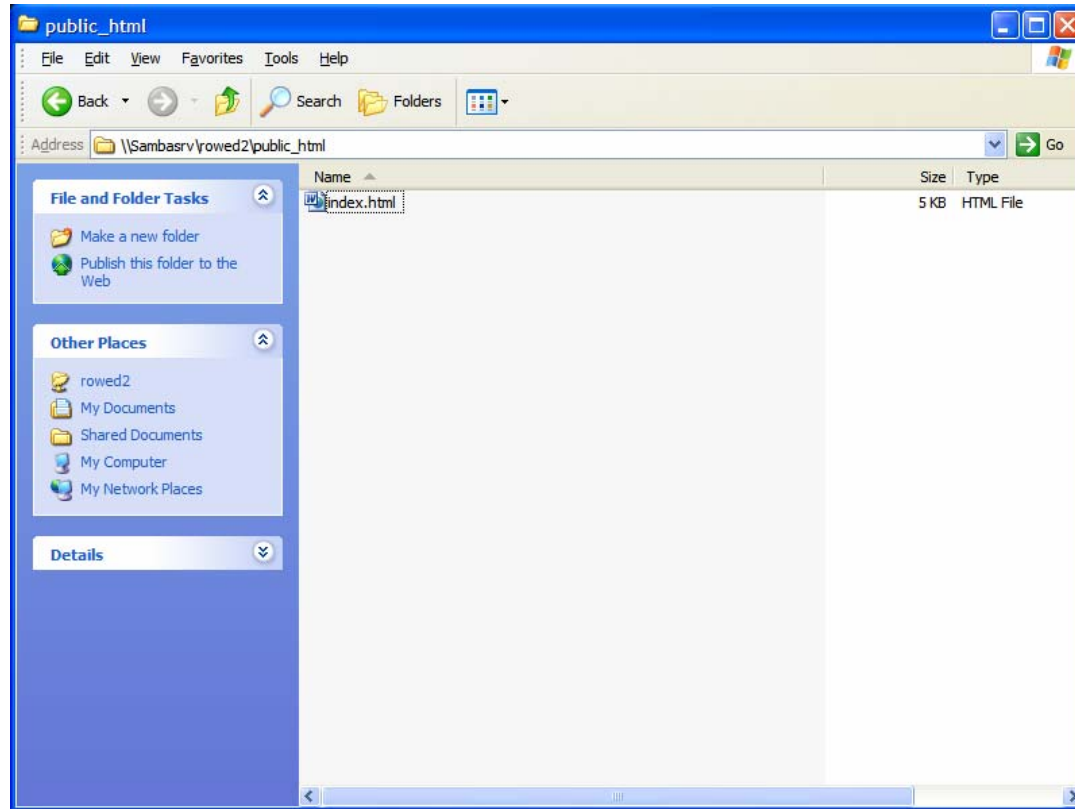
- Open up a terminal window, and create a new file in /etc:
sudo vi /etc/nsmb.conf
- And then put these lines into it:
[default]
minauth=none
- Save the file (press sequentially **esc : wq**), and reboot.

Web Publishing to Your RPI Homepage

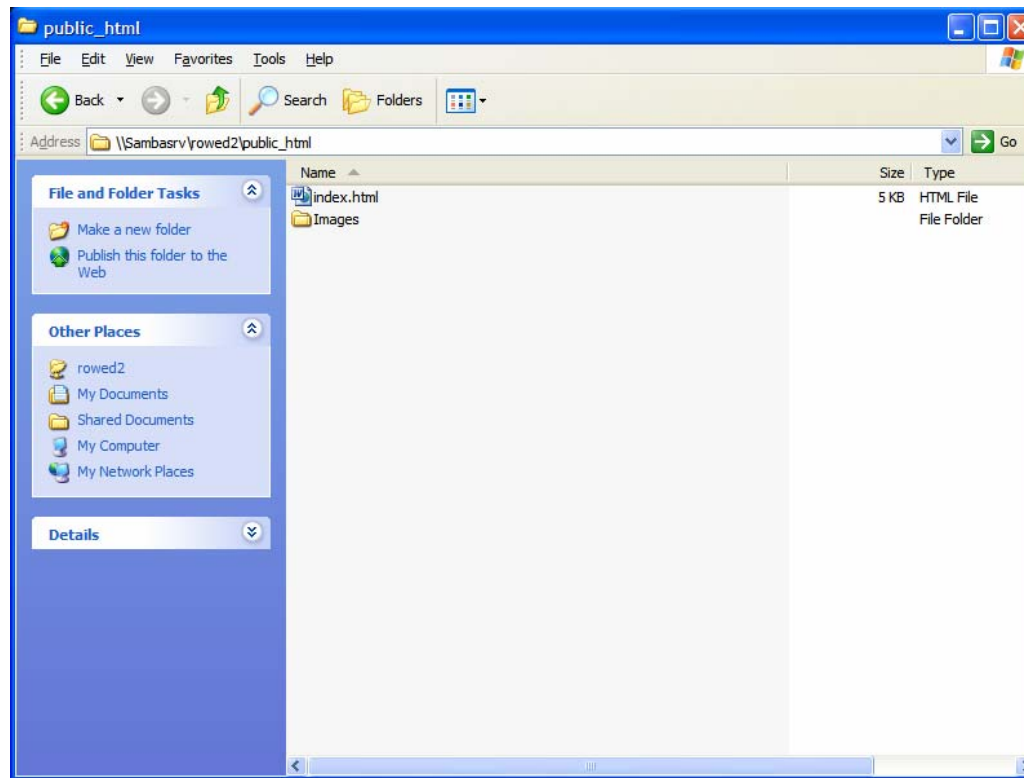
Now that you have logged into Smbasrv, you need to select the *public_html* folder as the storage location for your website files. Select the drive you have mapped as instructed above in order to find a collection of pre-existing folders. *Public_html* will be among them. This folder already exists on all RCS accounts for the specific purpose of housing files for your website.



Since this is a UNIX server which has certain conventions, including cAse-sEnsiTivity, you must place **all** files pertaining to your website in the public_html folder. You must also, as importantly, name the homepage of your website **index.html**. Any other name, such as home.htm or Index.html, will leave you with a site that does not function properly and could possibly expose all your saved files and folders to the browsing public.



You should also create a folder for the storage of your image files. This you can name as you wish. The figure below illustrates this:



Other files and folder names are up to you, and the program you choose to use to design your site. Just remember that in referencing the path to find files, such as links to other pages or images, should match the within your public_html folder on the sambasrv server.

Have a happy launch!