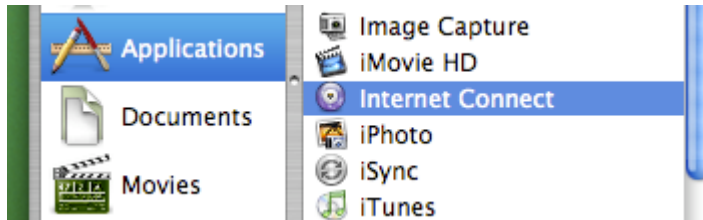


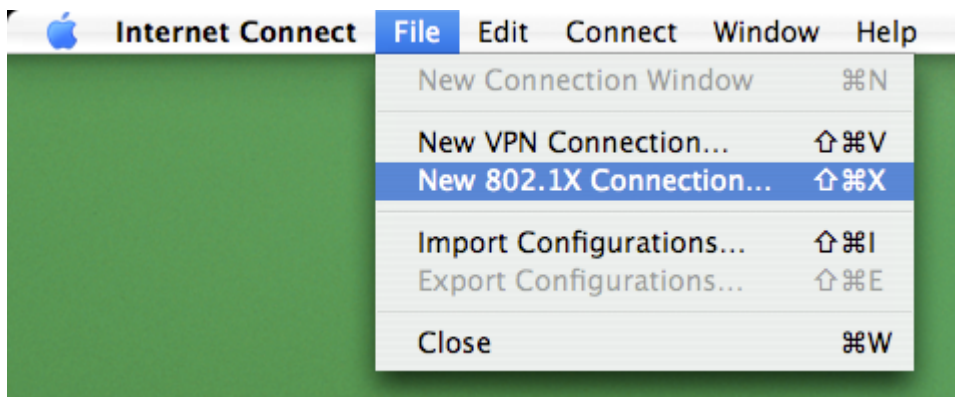
Connect to RPI's Wireless Network Using 802.x PEAP (GTC) on Mac OS X 10.4 (Tiger)

Instructions for configuring Internet Connect for 802.1X PEAP:

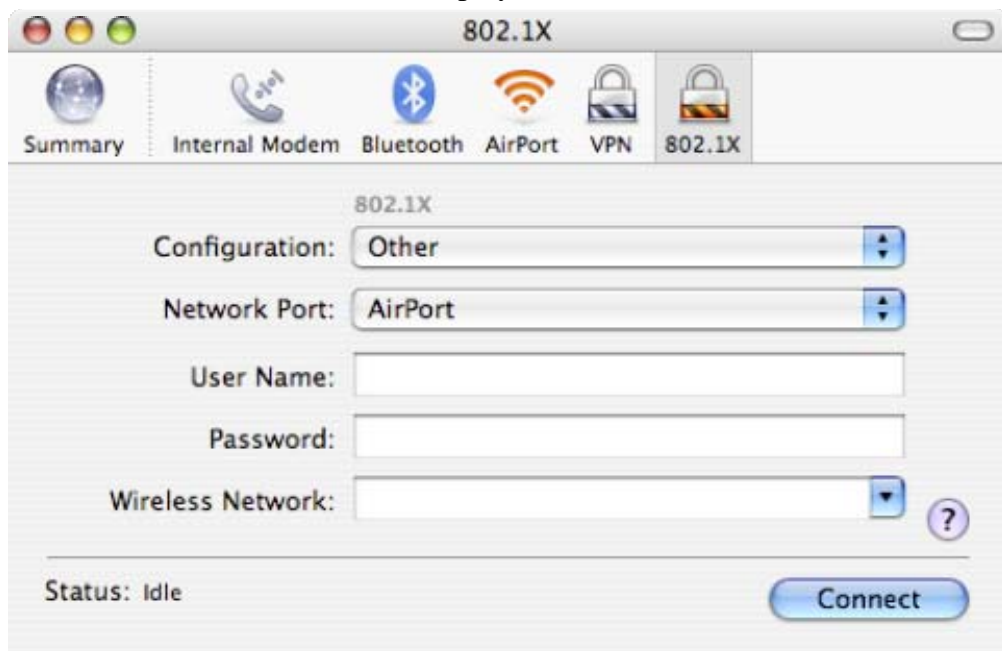
1. Start Internet Connect. Go to the Applications menu → double click **Internet Connect**.



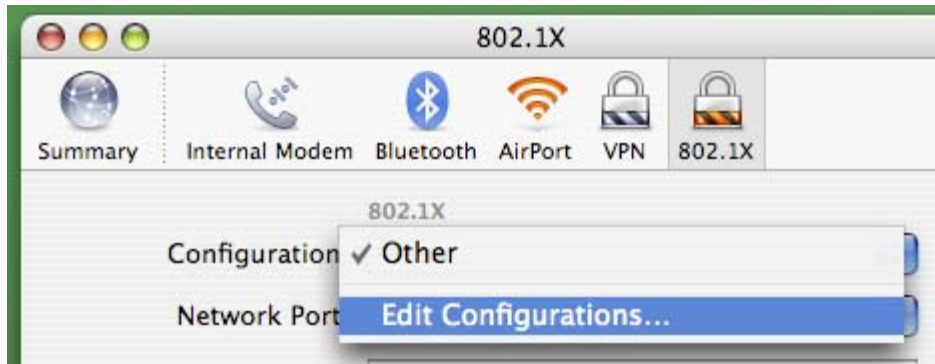
2. Select **File** menu → select **New 802.1X Connection....**



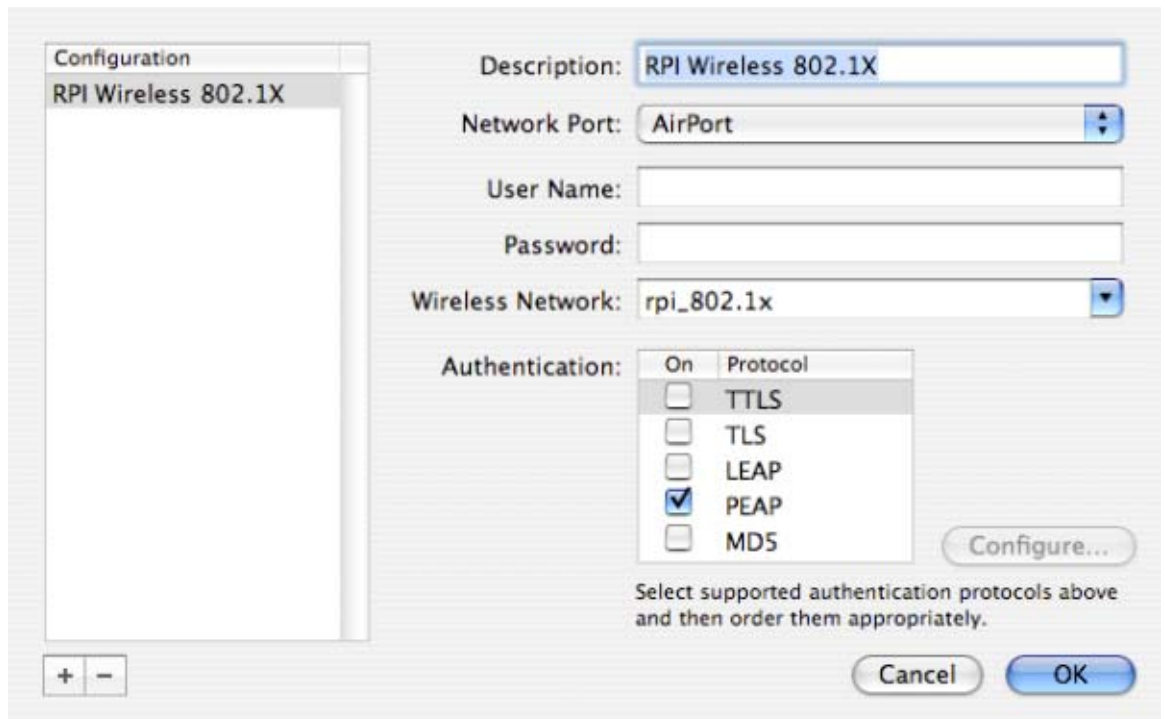
3. A new toolbar icon will now be displayed on the Internet Connect window.



- From the **Configuration** pop-up menu, select **Edit Configurations...**



- Setting up the profile:



- In the **Description** field, enter **RPI Wireless 802.1X**.
 - In the **Wireless Network** field, enter **rpi_802.1x**.
 - In the **Authentication** field, uncheck **TTLS**, **LEAP**, and **MD5**.
 - Click **OK** to save the profile.
- Click **Connect** to establish a secure connection to the RPI Wireless access points.

7. In the **802.1X Authentication** window, enter your RCS username and password, and then click **OK**.



8. If the computer is asking you to verify the certificate, click **Continue** to proceed.

