

## Hyperion (Brio) Insight Plug-in Installation - WinZip

The following instructions will walk you through installing the Insight Plug-in for Internet Explorer using the WinZip file utility. In order to use this installation method, **you must have WinZip installed on your computer**. If you do not have WinZip and would like information on how to obtain it, you can visit the WinZip website by going to <http://www.winzip.com>.

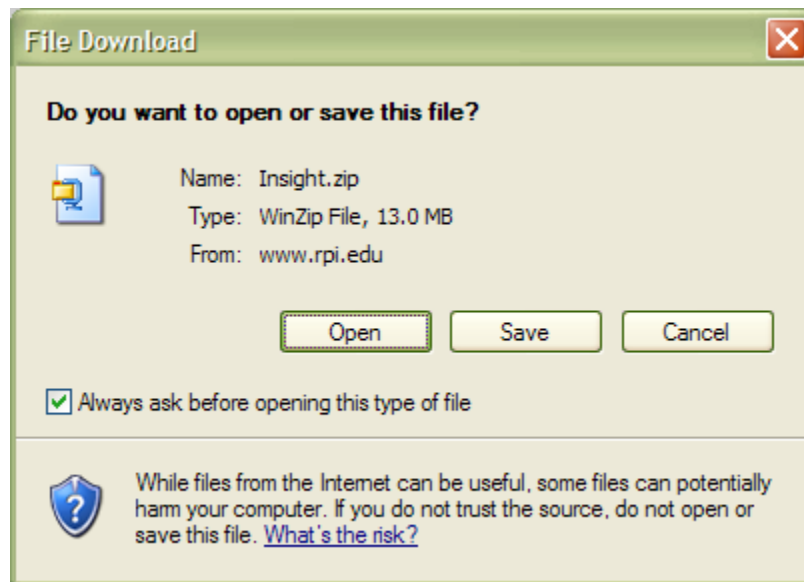
1. Download the Insight Plug-in zip file by clicking on the following link, or entering it into the address bar of Internet Explorer.

<http://www.rpi.edu/datawarehouse/docs/Insight.zip>

*note: the insight zip file can also be downloaded from the Brio Software section of the Rensselaer Data Warehouse web site.*

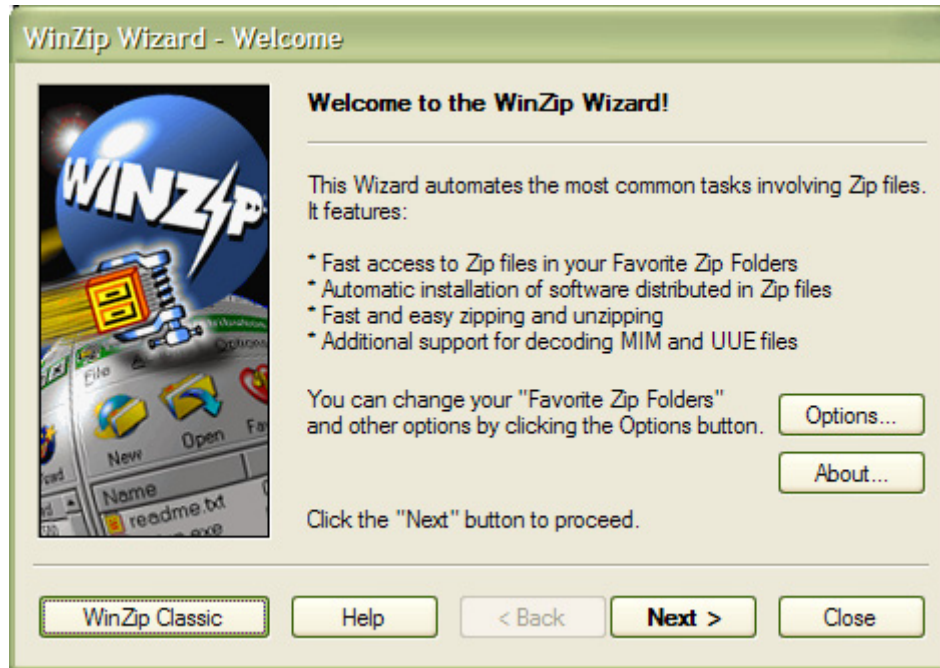
<http://www.rpi.edu/datawarehouse/dw-brio.html>

2. When the File Download window appears, click on **Open**.

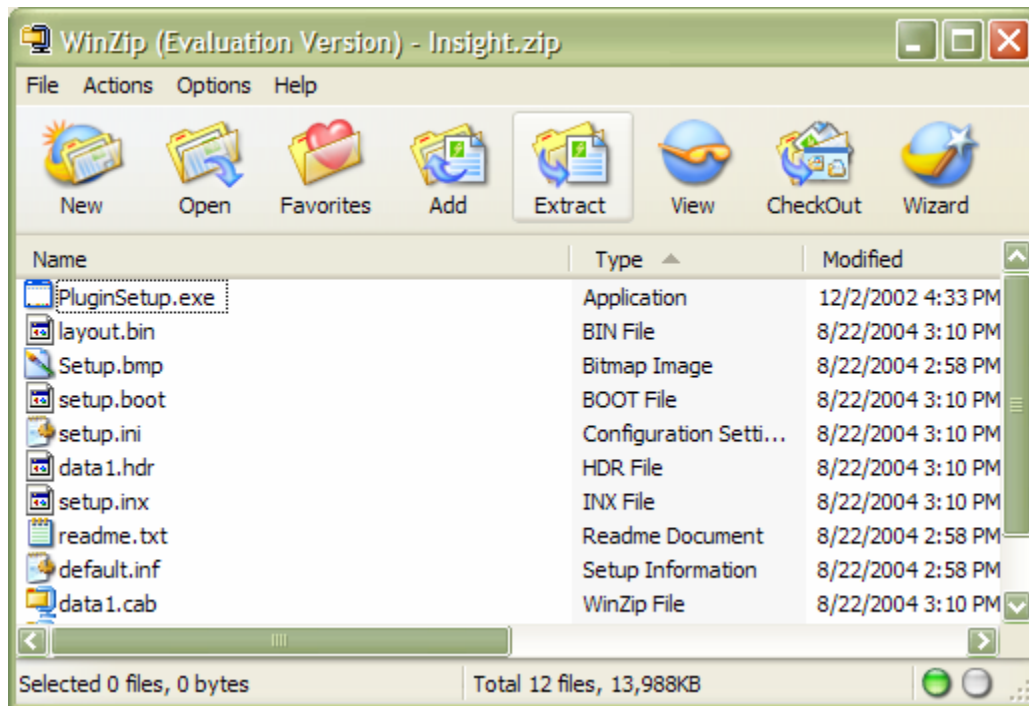


3. Internet Explorer should download the Insight.zip file and automatically open it in WinZip. If this does not happen, save the file to your desktop, locate it and then double click on it.

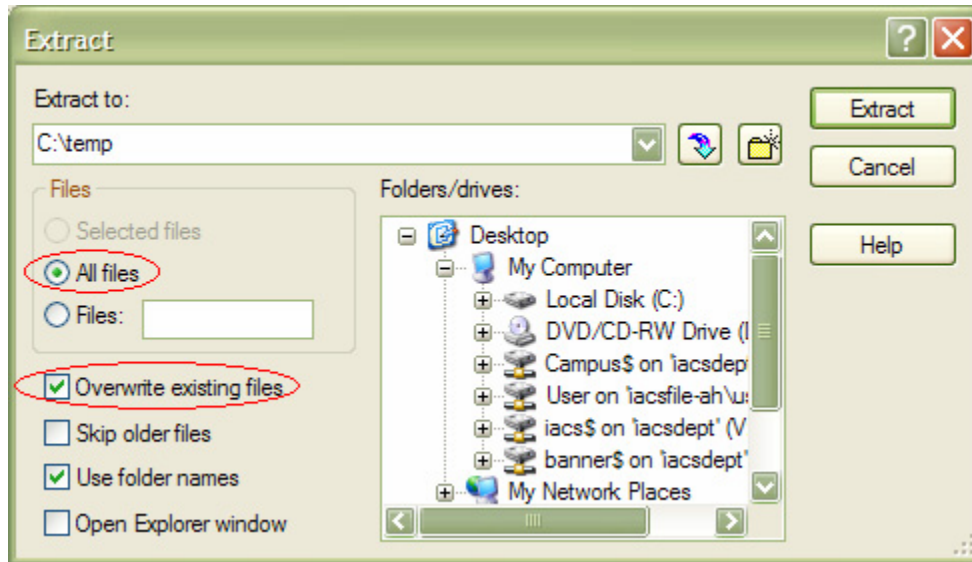
4. If the window below appears, click on the “**WinZip Classic**” button in the lower left hand corner, otherwise, proceed to the next step.



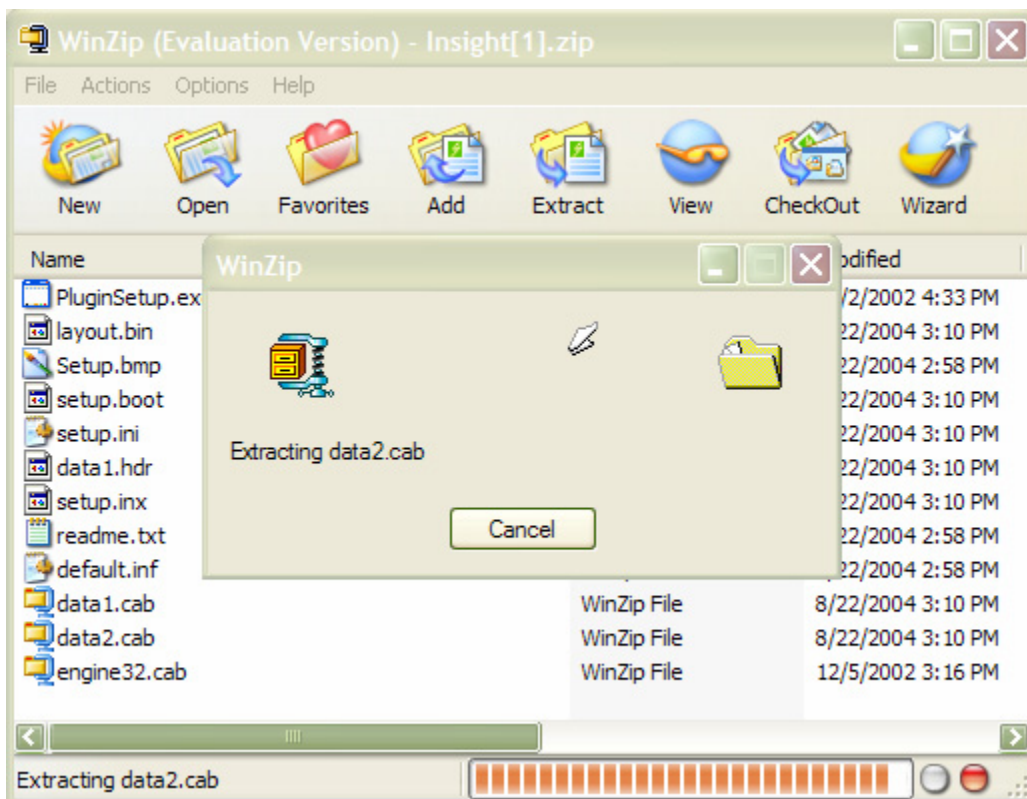
5. You should now see the following window which shows the contents of the Insight.zip file. Click on the **Extract** icon.



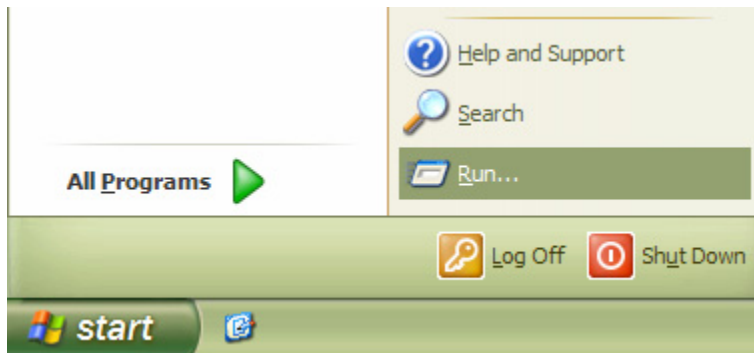
- From the Extract window...
  - In the **Extract to** text box type: `c:\temp`
  - Make sure that the **"All files"** option is selected.
  - Make sure that **"Overwrite existing files"** is checked.
  - When finished, click on **Extract**.



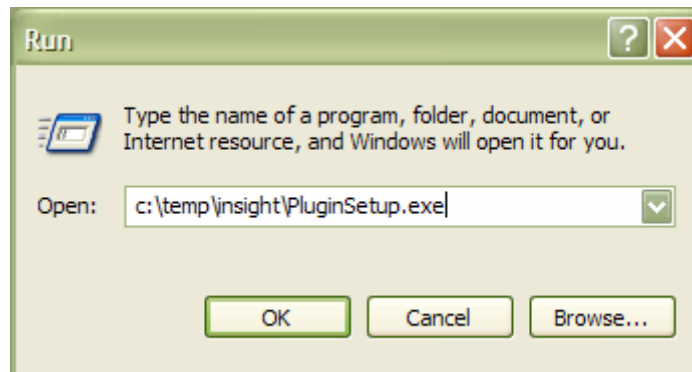
- You will see the following indicating that the files are being extracted.



- Once the files are finished extracting, click the **start** button from the windows task bar and then select **Run...**

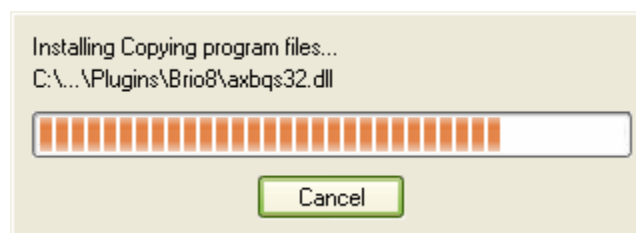


- Enter into the text box: `c:\temp\insight\PluginSetup.exe`

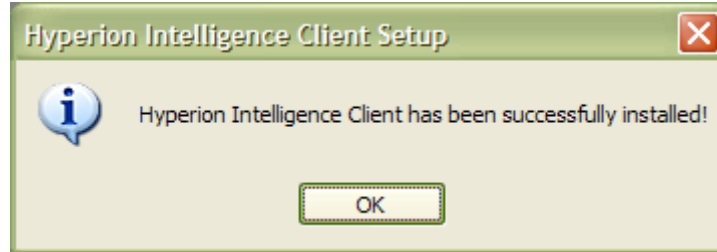


Then click the **OK** button.

- You will see the following status bar indicating that the plug-in is installing.



11. After the status bar completes you will be notified with the following message.



12. Click **OK** and the installation is complete.

To ensure that the plug-in has been properly installed, log into the data warehouse by going to <http://brio.server.rpi.edu/Brio>, then navigate to a BQY and open it. If the document fails to open, please ensure that this is not being caused by a pop-up blocker running in your web browser.

If you need additional help, please send an email to the data warehouse support group at [iacs-dw-sup-l@lists.rpi.edu](mailto:iacs-dw-sup-l@lists.rpi.edu).