

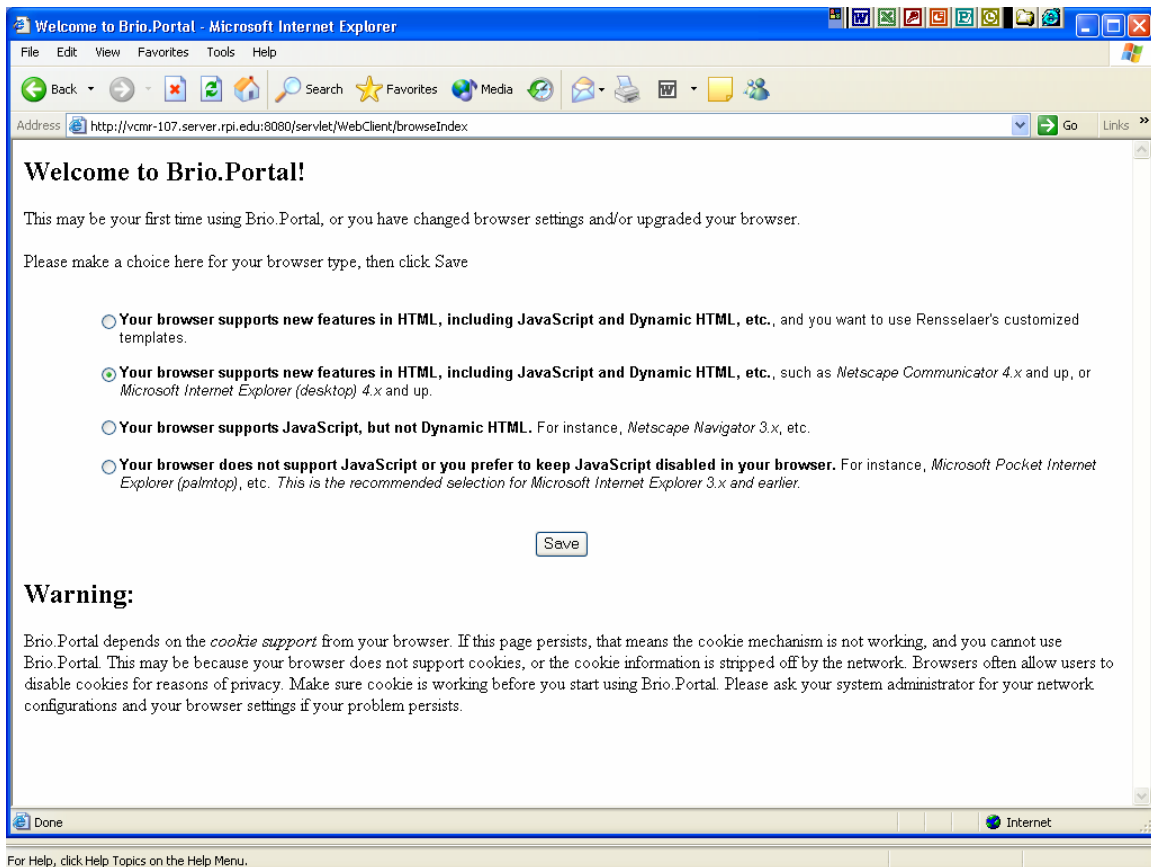
## Brio Portal & Insight – Getting Started

To access Brio Portal and install Brio Insight, please perform the following steps:

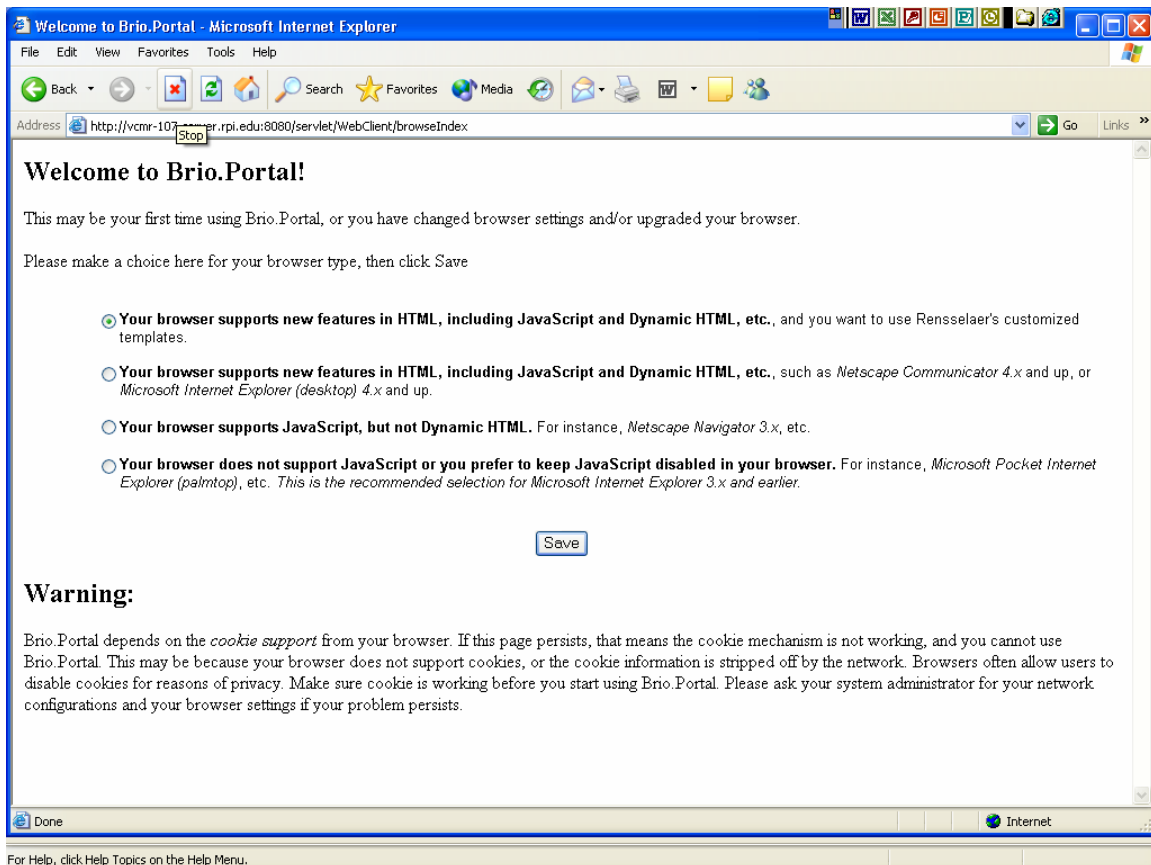
1. Go to the following URL using Internet Explorer:

<http://www.rpi.edu/datawarehouse/dw-portal.html>

2. If you are logging into Brio Portal for the first time, you will be prompted to select a browser type:

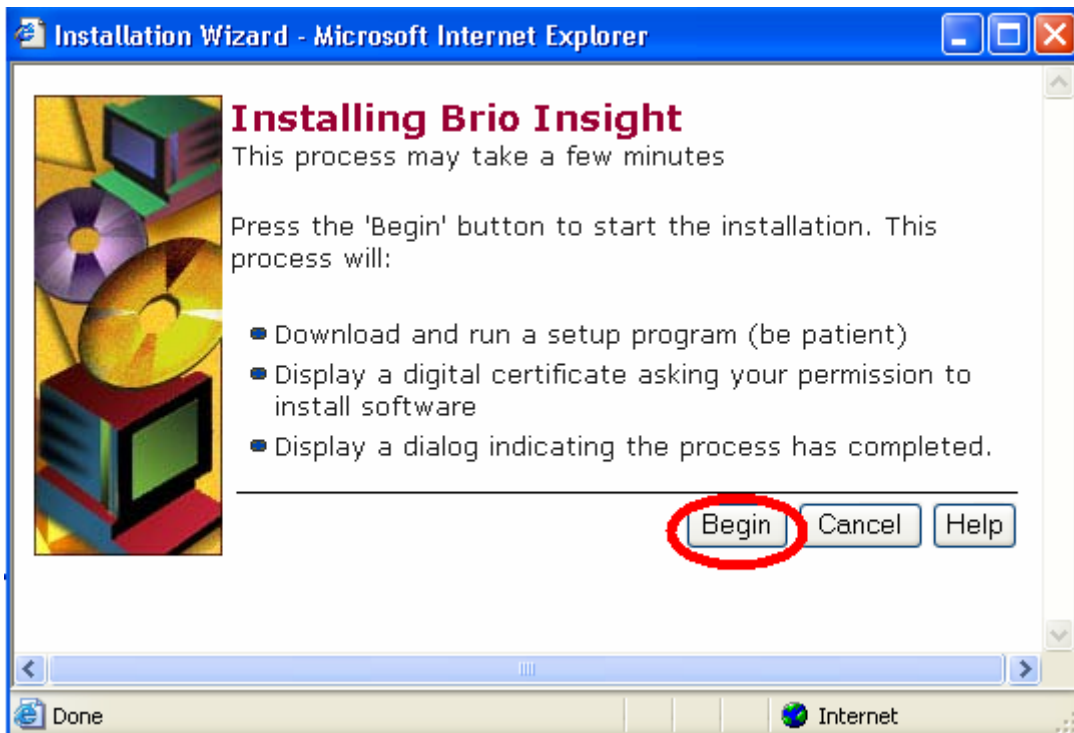


3. Select the first option (i.e. “**Your browser supports new features in HTML, including JavaScript and Dynamic HTML, etc., and you want to use Rensselaer’s customized templates**”), and click Save:



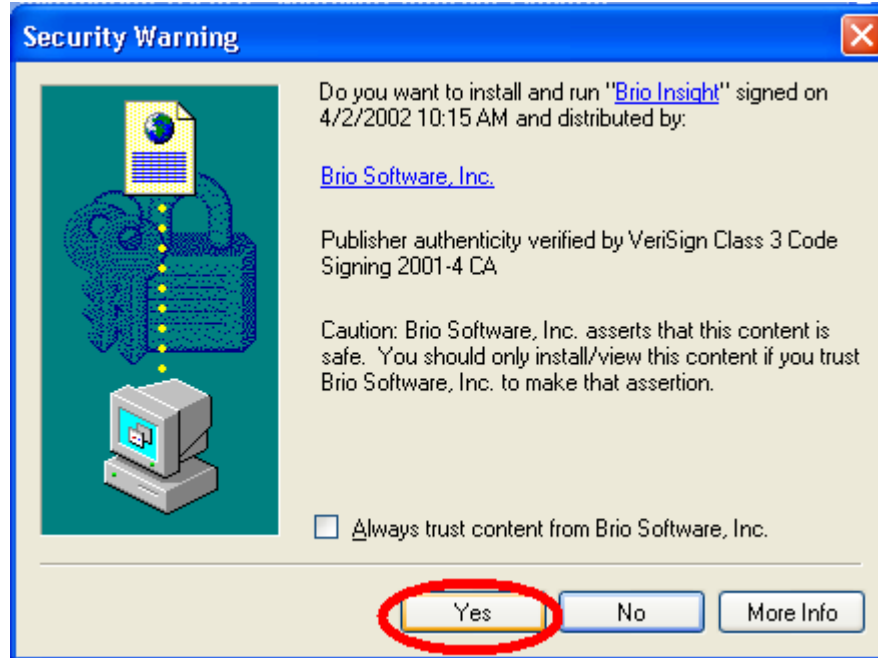
The **Installation Wizard - Installing Brio Insight** dialog box should appear.

4. To start the process of installing Brio Insight, click **Begin**:

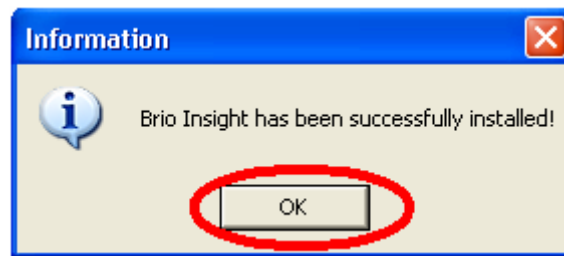


The Security Warning dialog box should appear.

5. To continue installing Brio Insight, click **Yes**:



6. Click OK.



The Brio Insight plug-in has been successfully installed. Note that you only need to install the Brio Insight plug-in once.